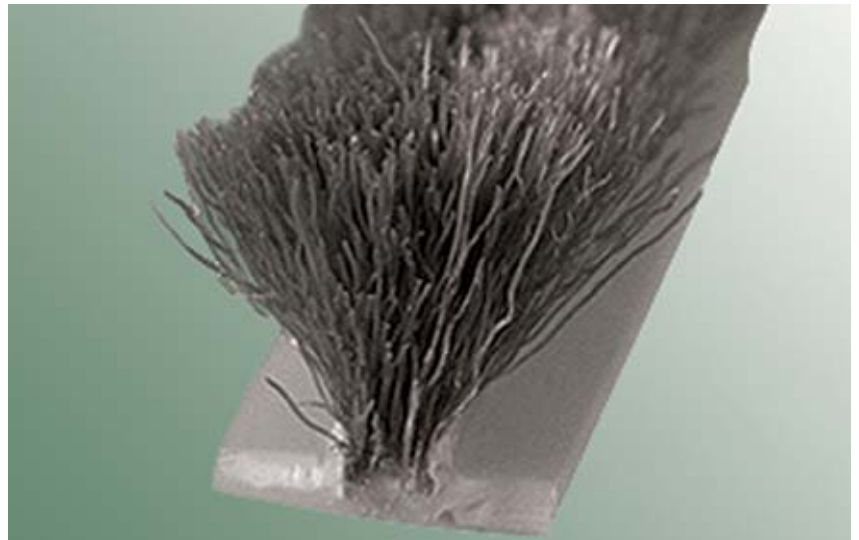


ULTRA PILE[®]

A self-supporting pile with built-in “pile directors” improves resiliency and reduces compression set

Ultrafab’s unique ultrasonic welding assembles the fin, fibers, and backing into an integrated, unified assembly that won’t break apart during fabrication or while in use



ULTRA PILE WEATHERSEAL FEATURES:

- Ultra Pile weatherseals have a structural integrity and consistency which assures a tight seal and barrier against air and water infiltration
- Solid polypropylene backing inserts more easily which saves time and reduces waste
- No possibility of off-center pile that binds, breaks or stretches in an extrusion
- Pile height and backing widths are always uniform because of Ultrafab’s unique ultrasonically welded manufacturing system
- **Pile Heights:** .130” (3.30mm) to .750” (19.05mm)
- **Pile Densities:** Light, medium, high or very high
- **Backing Widths:** .180” (4.57mm), .187” (4.75mm), .200” (5.08mm), .210” (5.33mm), .229” (5.82mm), .250” (6.35mm), .270” (6.86mm), .310” (7.87mm)
- **Backing Options:**

Standard:	all backing widths
Ultra-Loc [®] :	S7 – .180” (4.57mm), .187” (4.75mm), .200” (5.08mm), .210” (5.33mm), .270” (6.86mm), .310” (7.87mm)
	S9 – .180” (4.57mm), .187” (4.75mm), .200” (5.08mm), .210” (5.33mm), .229” (5.82mm), .270” (6.86mm), .310” (7.87mm)
	Ultra Grip [®] : .180” (4.57mm), .187” (4.75mm), .200” (5.08mm), .229” (5.82mm), .255” (6.48mm), .270” (6.86mm)
- **Adhesive:** Available on .187”, .270” and .310”
- **Colors:** Black, white, grey, beige, and brown

Need a fin? Ask about our Ultra Fin[®], Soft Touch Fin[®], Tri-Fin[®], Ultra Reach Fin[®] or Multi-Fin[®]